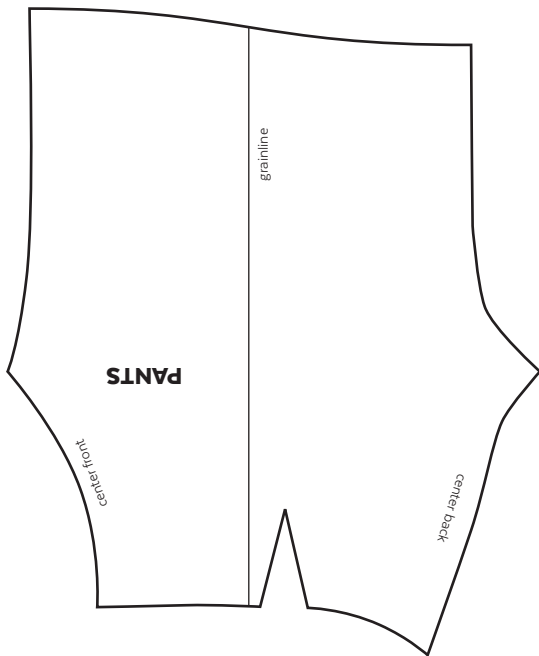


**This pattern was taken from an original Monster High Doll. It is property of Mattel and may not be used for commercial purposes!**

The paper can be folded to fit to DIN A7 format, so it easily fits in envelopes or clear sleeves for storage.

Print out this pattern on 100%/original size. The Format is DIN A5, but if you choose this option in your pdf viewer, it should print out the right size on every other format.

There is no seamallowance included in the pattern, add one that is to your liking!



## SEWING INSTRUCTIONS

1. Cut the piece twice. **No seamallowance is included!** Remember hem and backside need more seamallowance than the other parts.
2. Sew the darts on the side of the pattern piece.
3. Add all hems.
4. Sew front and back together, don't forget to add a closure.
5. Now add the seam between the legs.



*Puppen Lucker*

**MONSTER HIGH SHORTS PATTERN**